

LEGEND

- SOILS EXHIBITING POSSIBLE HIGH SHRINK-SWELL POTENTIAL
- RIVERSIDE CITY BOUNDARY
- RIVERSIDE SPHERE OF INFLUENCE

NOTE: SPHERE OF INFLUENCE BOUNDARIES ARE APPROXIMATE, PENDING APPLICATION TO RIVERSIDE LOCAL AGENCY FORMATION COMMISSION FOR A SPHERE OF INFLUENCE BOUNDARY ADJUSTMENT.

SOURCE: SCS Soil Survey of Western Riverside Area, California, November, 1971.

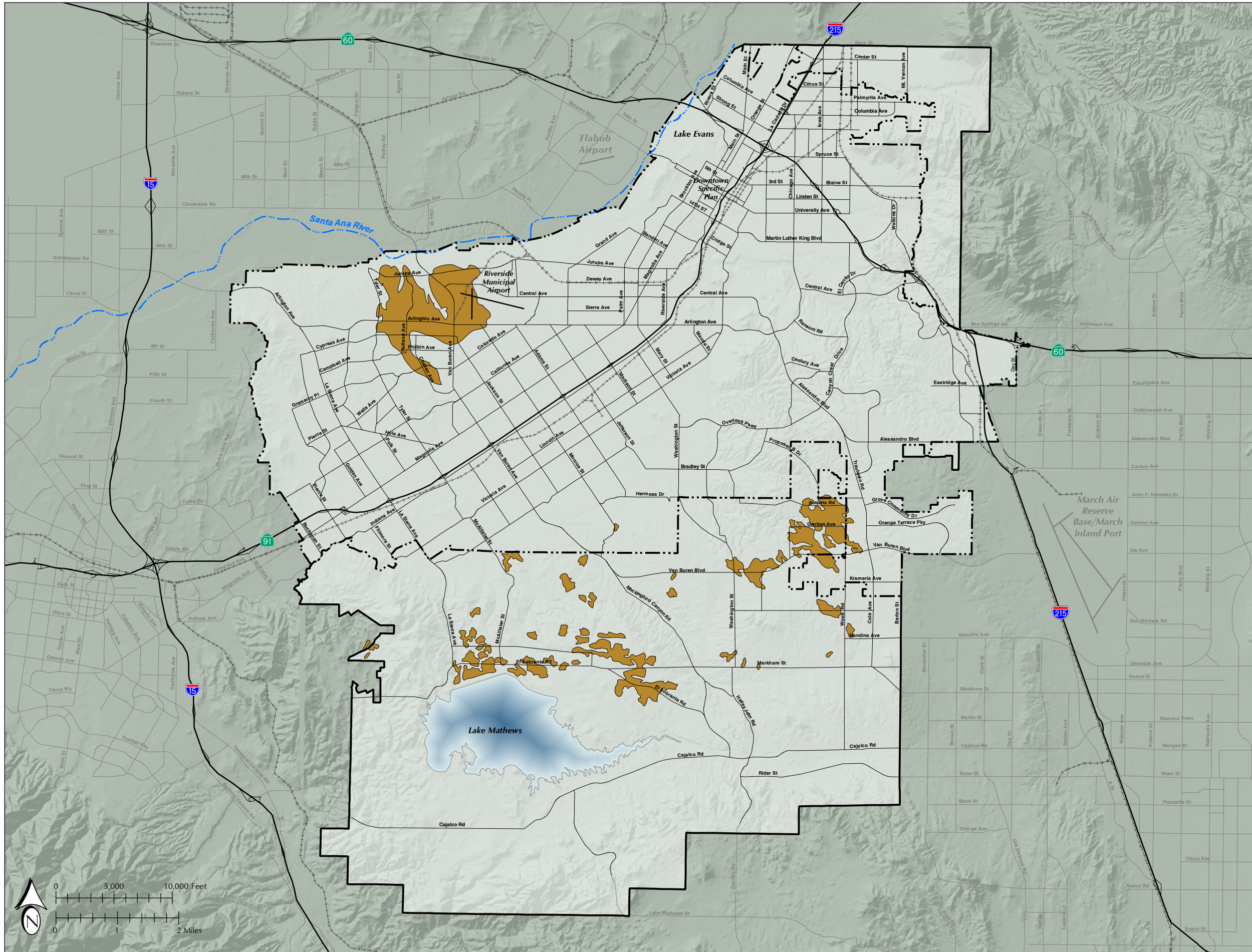


Figure PS-3
SOILS WITH HIGH
SHRINK - SWELL POTENTIAL